



SmartDitch Product Overview



Thousands of miles of existing ditches are deteriorated.

These problems caused by these types of ditches include:

- Loss of water used for irrigation and municipal supplies
- Soil Erosion
- Poor Drainage



One solution to solve these problems is

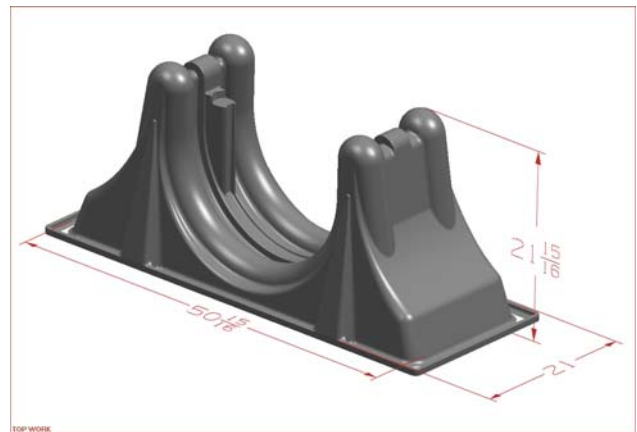
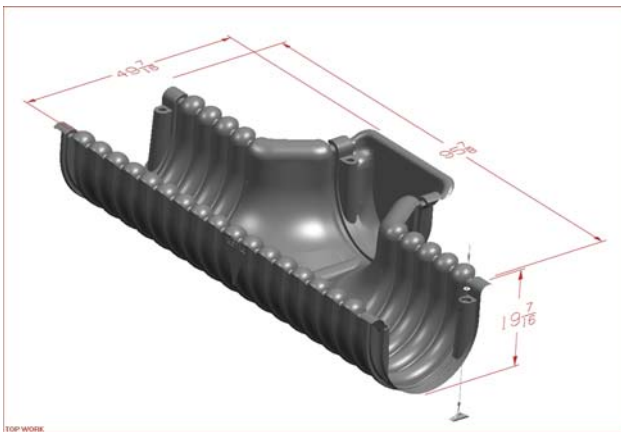
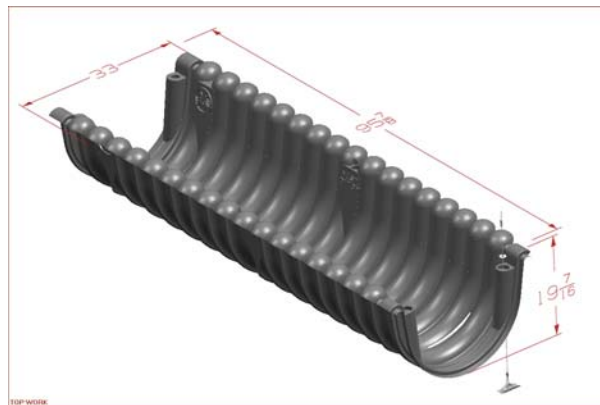
SmartDitch

A flexible thermoformed plastic ditch lining system.

SmartDitch Product Line

24" Semi-Circular Liner

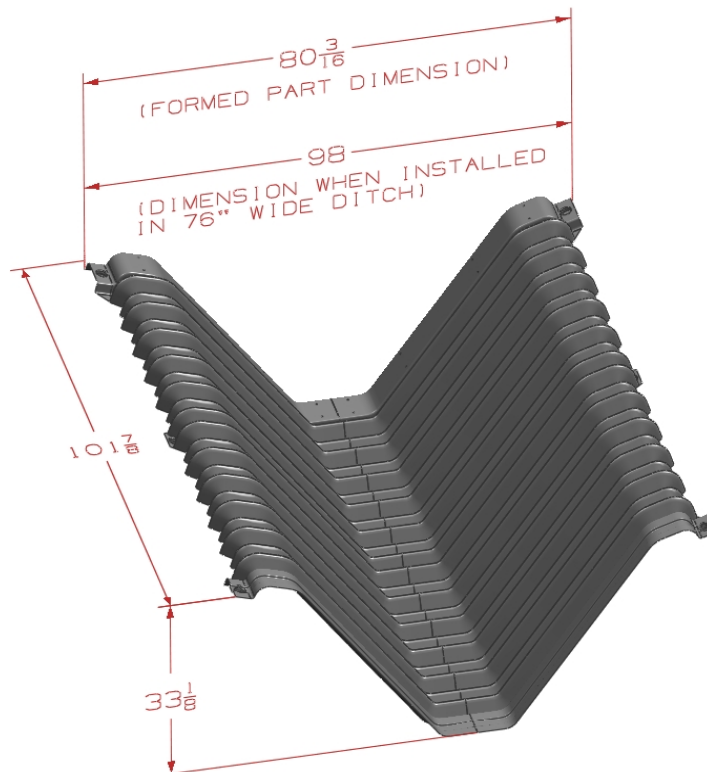
- Straight Sections
 - Manning's N= 0.022
- Combination Tees
 - Used at Intersections or for attachment of Valves or Gates
- Saddles
 - Used for above ground applications and for loose soil conditions



SmartDitch Product Line

Trapezoidal Liner

- Straight Sections
 - Manning's N= 0.022
- Gate / Valve Inlet
 - Used for attachment of Valves or Gates





SmartDitch is easily transported to the jobsite.



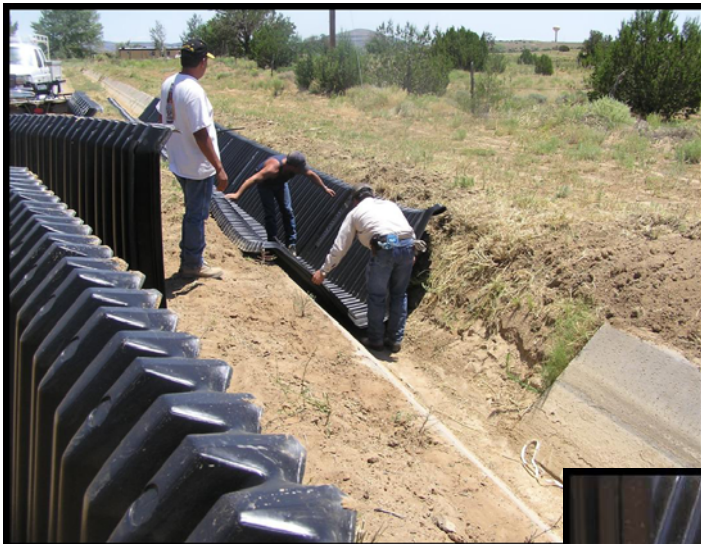
For new installations a backhoe is used to cut a trench matching the shape of the SmartDitch liner.



For rehab applications existing broken concrete is removed when necessary and SmartDitch is placed within the existing trench



SmartDitch sections are lowered into the trench by hand.



The corrugations are overlapped at the gasketed joint to form a watertight seal.





Holes are drilled into the overlapped corrugations and Nylon fasteners are hammered into place to secure the sections into place.





The SmartDitch Anchoring System is driven into the ground and secured with a stainless steel anchor to the top of the liner.





SmartDitch
liners are
available with
in-line
headwalls for
attachment of
gates or
valves.







Before



After









Erosion / Drainage Control Application

Utilized to reduce sediment build-up at culverts and control erosion in ditch.





Ditch excavation,
clean-out and site
preparation for
insertion of Smart
Ditch





Back-filling sand and soil to stabilize, tapering ditch line for transition into Smart Ditch.



Placement of coconut fiber under rip-rap stone for added erosion protection in transitional zone.



