



Structural Plate Pipe-Arch

Structure No.	Span (ft-in)	Rise (ft-in)	Area (ft ²)
PA-A-1	6-7	5-8	29.6
PA-A-2	6-11	5-9	31.9
PA-A-3	7-3	5-11	34.3
PA-A-4	7-9	6-0	36.8
PA-A-5	8-1	6-1	39.3
PA-A-6	8-5	6-3	41.9
PA-A-7	8-10	6-4	44.5
PA-A-8	9-3	6-5	47.1
PA-A-9	9-7	6-6	49.9
PA-A-10	9-11	6-8	52.7
PA-A-11	10-3	6-9	55.5
PA-A-12	10-9	6-10	58.4
PA-A-13	11-1	7-0	61.4
PA-A-14	11-5	7-1	64.4
PA-A-15	11-9	7-2	67.5
PA-A-16	12-3	7-3	70.5

Structure No.	Span (ft-in)	Rise (ft-in)	Area (ft ²)
PA-A-17	12-7	7-5	73.7
PA-A-18	12-11	7-6	77.0
PA-A-19	13-1	8-2	83.0
PA-A-20	13-1	8-4	86.8
PA-A-21	13-11	8-5	90.3
PA-A-22	14-0	8-7	94.2
PA-A-23	13-11	9-5	101.5
PA-A-24	14-3	9-7	105.7
PA-A-25	14-8	9-8	109.9
PA-A-26	14-11	9-10	114.2
PA-A-27	15-4	10-0	118.6
PA-A-28	15-7	10-2	123.1
PA-A-29	16-1	10-4	127.6
PA-A-30	16-4	10-6	132.3
PA-A-31	16-9	10-8	136.9
PA-A-32	17-0	10-10	141.8

Structure No.	Span (ft-in)	Rise (ft-in)	Area (ft ²)
PA-A-33	17-3	11-0	146.7
PA-A-34	17-9	11-2	151.6
PA-A-35	18-0	11-4	156.7
PA-A-36	18-5	11-6	161.7
PA-A-37	18-8	11-8	167.0
PA-A-38	19-2	11-9	172.2
PA-A-39	19-5	11-11	177.6
PA-A-40	19-10	12-1	182.9
PA-A-41	20-1	12-3	188.5
PA-A-42	20-1	12-6	194.4
PA-A-43	20-10	12-7	199.7
PA-A-44	21-6	12-11	211.2
PA-A-45	20-1	13-11	216.6
PA-A-46	20-7	14-3	224.0
PA-A-47	21-5	14-7	241.5
PA-A-48	21-11	14-11	254.7



Structural Plate Arch



Structure No.	Span (ft-in)	Rise (ft-in)	Area (ft²)
A-A-1	5-0	1-9	6.5
A-A-2		2-3	8.5
A-A-3		2-7	10.4
A-A-4	6-0	1-10	7.8
A-A-5		2-4	10.2
A-A-6		2-9	12.6
A-A-7		3-2	14.9
A-A-8	7-0	2-4	12.0
A-A-9		2-10	14.8
A-A-10		3-3	17.5
A-A-11	8-0	3-8	20.3
A-A-12		2-11	17.0
A-A-13		3-4	20.2
A-A-14		4-2	26.4
A-A-15	9-0	2-11	19.1
A-A-16		3-10	26.3
A-A-17		4-8	33.4
A-A-18	10-0	3-6	25.3
A-A-19		4-5	33.3
A-A-20		5-2	41.2
A-A-21	11-0	3-6	27.8
A-A-22		4-6	36.8
A-A-23		5-8	49.8
A-A-24	12-0	4-1	35.3
A-A-25		5-0	45.0
A-A-26		6-3	59.3
A-A-27	13-0	4-1	38.1
A-A-28		5-1	48.9
A-A-29		5-11	59.3
A-A-30		6-9	69.5

Structure No.	Span (ft-in)	Rise (ft-in)	Area (ft²)
A-A-31	14-0	4-8	46.9
A-A-32		5-7	58.4
A-A-33		6-5	69.5
A-A-34		7-3	80.6
A-A-35	15-0	4-8	50.0
A-A-36		5-8	62.6
A-A-37		6-7	74.7
A-A-38		7-5	86.5
A-A-39	16-0	7-9	92.5
A-A-40		5-3	60.0
A-A-41		6-2	73.3
A-A-42		7-1	86.2
A-A-43	17-0	7-11	98.9
A-A-44		8-3	105.2
A-A-45		5-3	63.5
A-A-46		6-3	77.9
A-A-47	18-0	7-2	91.7
A-A-48		8-0	105.2
A-A-49		8-10	118.7
A-A-50	19-0	5-9	74.8
A-A-51		6-9	89.9
A-A-52		7-8	104.5
A-A-53		8-6	118.8
A-A-54	20-0	8-11	125.9
A-A-55		6-4	86.9
A-A-56		7-4	102.7
A-A-57		8-2	118.0
A-A-58	21-0	9-0	133.2
A-A-59		9-5	140.7

Structure No.	Span (ft-in)	Rise (ft-in)	Area (ft²)
A-A-60	20-0	6-4	91.2
A-A-61		7-4	108.4
A-A-62		8-3	124.4
A-A-63		9-2	140.4
A-A-64	21-0	10-0	156.3
A-A-65		10-4	164.2
A-A-66		6-4	95.4
A-A-67		7-5	113.5
A-A-68	22-0	8-4	130.7
A-A-69		9-3	147.6
A-A-70		10-1	164.3
A-A-71		10-10	181.0
A-A-72	23-0	6-11	109.2
A-A-73		7-11	127.9
A-A-74		8-11	146.0
A-A-75		9-9	163.6
A-A-76	24-0	10-7	181.1
A-A-77		11-5	198.6
A-A-78		7-6	123.8
A-A-79		8-0	133.6
A-A-80	25-0	8-6	143.2
A-A-81		8-11	152.7
A-A-82		9-5	162.0
A-A-83		9-10	171.3
A-A-84	26-0	10-3	180.5
A-A-85		10-8	189.6
A-A-86		11-1	198.8
A-A-87		11-6	207.9
A-A-88	11-11	217.1	





Structural Plate Box Culvert



Structure No.	Span (ft-in)	Rise (ft-in)	Area (ft ²)
BC-A-1	8-9	2-6	18.4
BC-A-2	9-2	3-3	25.4
BC-A-3	9-7	4-1	32.6
BC-A-4	10-0	4-10	40.2
BC-A-5	10-6	5-7	48.1
BC-A-6	10-11	6-4	56.4
BC-A-7	11-4	7-2	65.0
BC-A-8	10-2	2-8	23.0
BC-A-9	10-7	3-5	31.1
BC-A-10	10-11	4-3	39.5
BC-A-11	11-4	5-0	48.2
BC-A-12	11-8	5-9	57.2
BC-A-13	12-1	6-7	66.4
BC-A-14	12-5	7-4	76.0
BC-A-15	11-7	2-10	28.1
BC-A-16	11-11	3-7	37.4
BC-A-17	12-3	4-5	46.9
BC-A-18	12-7	5-2	56.6
BC-A-19	12-11	6-0	66.6
BC-A-20	13-3	6-9	76.9
BC-A-21	13-0	3-0	33.8
BC-A-22	13-4	3-10	44.2
BC-A-23	13-7	4-7	54.8
BC-A-24	13-10	5-5	65.6
BC-A-25	14-1	6-2	76.6
BC-A-26	14-5	3-3	40.0
BC-A-27	14-8	4-1	51.5
BC-A-28	14-10	4-10	63.2
BC-A-29	15-1	5-8	75.1
BC-A-30	15-4	6-5	87.2
BC-A-31	15-6	7-3	99.4
BC-A-32	15-9	8-0	111.8
BC-A-33	15-10	3-6	46.8
BC-A-34	16-0	4-3	59.5
BC-A-35	16-2	5-1	72.3
BC-A-36	16-4	5-11	85.2
BC-A-37	16-6	6-8	98.3
BC-A-38	16-8	7-6	111.5
BC-A-39	16-10	8-3	124.8
BC-A-40	17-9	3-10	54.4
BC-A-41	18-2	4-7	68.3
BC-A-42	18-7	5-4	82.5
BC-A-43	19-0	6-1	97.1
BC-A-44	19-5	6-11	111.9
BC-A-45	19-10	7-8	127.1
BC-A-46	20-3	8-5	142.6
BC-A-47	19-1	4-2	63.3
BC-A-48	19-5	4-11	78.3

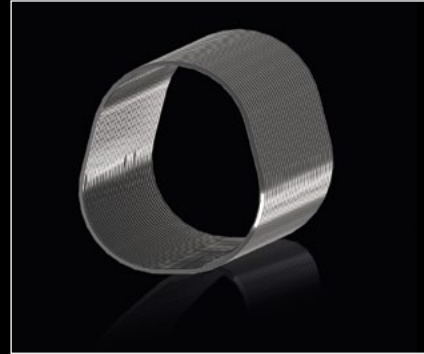
Structure No.	Span (ft-in)	Rise (ft-in)	Area (ft ²)
BC-A-49	19-9	5-8	93.6
BC-A-50	20-1	6-6	109.2
BC-A-51	20-6	7-3	125.0
BC-A-52	20-10	8-1	141.2
BC-A-53	21-2	8-10	157.6
BC-A-54	20-4	4-6	73.1
BC-A-55	20-7	5-3	89.2
BC-A-56	20-11	6-1	105.5
BC-A-57	21-3	6-10	122.1
BC-A-58	21-6	7-8	139.0
BC-A-59	21-10	8-5	156.0
BC-A-60	22-1	9-3	173.3
BC-A-61	21-7	4-11	83.8
BC-A-62	21-10	5-8	101.0
BC-A-63	22-1	6-6	118.4
BC-A-64	22-3	7-3	135.9
BC-A-65	22-6	8-1	153.7
BC-A-66	22-9	8-10	171.6
BC-A-67	23-0	9-8	189.8
BC-A-68	22-9	5-4	95.5
BC-A-69	23-0	6-1	113.7
BC-A-70	23-2	6-11	132.1
BC-A-71	23-4	7-8	150.6
BC-A-72	23-6	8-6	169.3
BC-A-73	23-8	9-3	188.1
BC-A-74	23-10	10-1	207.0
BC-A-75	24-0	5-9	108.2
BC-A-76	24-1	6-6	127.5
BC-A-77	24-3	7-4	146.8
BC-A-78	24-4	8-2	166.2
BC-A-79	24-5	8-11	185.7
BC-A-80	24-7	9-9	205.3
BC-A-81	24-8	10-6	225.0
BC-A-82	25-2	6-2	122.0
BC-A-83	25-2	7-0	142.2
BC-A-84	25-3	7-9	162.4
BC-A-85	25-4	8-7	182.6
BC-A-86	25-4	9-5	202.9
BC-A-87	25-5	10-2	223.3
BC-A-88	26-7	5-5	111.6
BC-A-89	27-0	6-3	132.4
BC-A-90	27-5	7-0	153.4
BC-A-91	27-8	7-9	174.8
BC-A-92	28-3	8-7	196.5
BC-A-93	28-8	9-4	218.6
BC-A-94	29-2	10-1	241.0
BC-A-95	27-10	5-10	125.4
BC-A-96	28-3	6-8	147.3

Structure No.	Span (ft-in)	Rise (ft-in)	Area (ft ²)
BC-A-97	28-7	7-5	169.4
BC-A-98	29-0	8-3	191.8
BC-A-99	29-4	9-0	214.6
BC-A-100	29-8	9-9	237.6
BC-A-101	30-0	10-7	260.9
BC-A-102	29-1	6-4	140.2
BC-A-103	29-4	7-1	163.2
BC-A-104	29-9	7-11	186.4
BC-A-105	30-0	8-8	209.8
BC-A-106	30-4	9-5	233.6
BC-A-107	30-7	10-3	257.5
BC-A-108	31-0	11-0	281.8
BC-A-109	30-3	6-9	156.1
BC-A-110	30-6	7-7	160.1
BC-A-111	30-10	8-4	204.4
BC-A-112	31-1	9-2	228.8
BC-A-113	31-4	9-11	253.5
BC-A-114	31-8	10-9	278.4
BC-A-115	31-11	11-6	303.5
BC-A-116	31-5	7-3	173.1
BC-A-117	31-8	8-0	198.2
BC-A-118	31-10	8-10	223.4
BC-A-119	32-1	9-8	248.8
BC-A-120	32-3	10-5	274.4
BC-A-121	32-7	11-3	300.1
BC-A-122	32-8	12-0	326.1
BC-A-123	32-7	7-9	191.3
BC-A-124	32-9	8-6	217.3
BC-A-125	32-11	9-4	243.4
BC-A-126	33-1	10-2	269.7
BC-A-127	33-3	10-11	296.4
BC-A-128	33-8	11-9	322.8
BC-A-129	33-8	12-6	349.5
BC-A-130	33-8	8-3	210.5
BC-A-131	33-9	9-1	237.5
BC-A-132	33-11	9-10	264.5
BC-A-133	34-1	10-8	291.7
BC-A-134	34-2	11-5	319.0
BC-A-135	34-4	12-3	346.4
BC-A-136	34-5	13-1	373.8
BC-A-137	34-9	8-9	230.9
BC-A-138	34-10	9-7	258.1
BC-A-139	34-11	10-4	286.7
BC-A-140	35-0	11-2	314.6
BC-A-141	35-1	12-0	342.7
BC-A-142	35-2	12-9	370.8
BC-A-143	35-3	13-7	399.0

Structural Plate Underpass (Pedestrian/Animal)

Structure No.	Span (ft-in)	Rise (ft-in)	Area (ft ²)
U-A-1	6-1	5-9	28
U-A-2	6-3	6-1	30
U-A-3	6-3	6-5	32
U-A-4	6-2	6-11	34

Structure No.	Span (ft-in)	Rise (ft-in)	Area (ft ²)
U-A-5	6-4	7-3	37
U-A-6	6-3	7-9	39
U-A-7	6-5	8-1	42



Structural Plate Underpass (Vehicular)

Structure No.	Span (ft-in)	Rise (ft-in)	Area (ft ²)
U-A-8	12-1	11-0	106
U-A-9	12-10	11-2	114
U-A-10	13-0	12-0	124
U-A-11	13-8	12-4	133
U-A-12	14-0	12-11	143
U-A-13	14-6	13-5	155
U-A-14	14-8	14-1	165
U-A-15	15-5	14-5	177
U-A-16	15-6	15-2	190

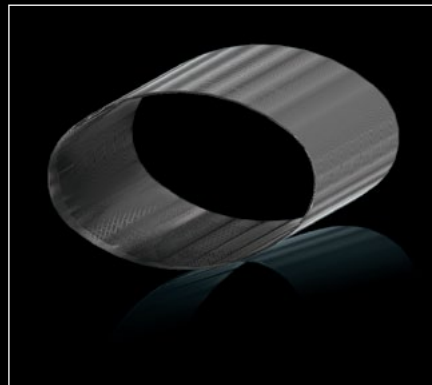
Structure No.	Span (ft-in)	Rise (ft-in)	Area (ft ²)
U-A-17	16-2	15-6	200
U-A-18	16-6	16-0	208
U-A-19	16-8	16-4	215
U-A-20	17-3	17-1	240
U-A-21	18-5	16-11	253
U-A-22	19-0	17-4	267
U-A-23	19-7	17-7	281
U-A-24	20-5	17-9	296



Structural Plate Horizontal Ellipse

Structure No.	Span (ft-in)	Rise (ft-in)	Area (ft ²)
HE-A-1	9-2	6-8	47.9
HE-A-2	9-11	7-0	53.7
HE-A-3	10-7	7-3	59.8
HE-A-4	10-11	7-11	68.0
HE-A-5	11-4	7-6	66.2
HE-A-6	11-8	8-3	74.8
HE-A-7	12-0	8-11	83.8
HE-A-8	12-1	7-9	72.8
HE-A-9	12-5	8-6	82.0

Structure No.	Span (ft-in)	Rise (ft-in)	Area (ft ²)
HE-A-10	12-9	9-2	91.5
HE-A-11	12-10	8-1	79.7
HE-A-12	13-2	8-9	89.4
HE-A-13	13-6	9-6	99.4
HE-A-14	13-7	8-4	86.8
HE-A-15	13-11	9-0	97.1
HE-A-16	14-3	9-9	107.6
HE-A-17	14-7	10-5	118.5
HE-A-18	14-11	11-2	129.7



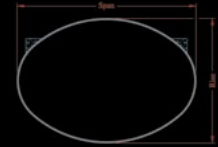


Long Span Horizontal Ellipse

Structure No.	Span (ft-in)	Rise (ft-in)	Area (ft²)
LSHE-A-1	19-4	12-9	191
LSHE-A-2	20-1	13-0	202
LSHE-A-3	20-2	11-11	183
LSHE-A-4	20-10	12-2	194
LSHE-A-5	21-0	15-2	248
LSHE-A-6	21-11	13-1	221
LSHE-A-7	22-6	15-8	275
LSHE-A-8	23-0	14-1	249
LSHE-A-9	23-3	15-11	288
LSHE-A-10	24-4	16-11	320
LSHE-A-11	24-6	14-8	275
LSHE-A-12	25-3	14-11	288
LSHE-A-13	25-6	16-9	330

Structure No.	Span (ft-in)	Rise (ft-in)	Area (ft²)
LSHE-A-14	26-2	18-2	369
LSHE-A-15	26-4	15-10	320
LSHE-A-16	27-0	16-2	334
LSHE-A-17	27-2	19-1	405
LSHE-A-18	27-11	19-5	422
LSHE-A-19	28-1	17-1	369
LSHE-A-20	28-10	17-5	385
LSHE-A-21	29-5	19-11	455
LSHE-A-22	30-2	20-2	473
LSHE-A-23	30-4	17-11	416
LSHE-A-24	31-3	21-2	513
LSHE-A-25	31-5	18-11	455
LSHE-A-26	32-1	19-2	472

Structure No.	Span (ft-in)	Rise (ft-in)	Area (ft²)
LSHE-A-27	32-3	22-2	556
LSHE-A-28	33-0	22-5	575
LSHE-A-29	32-5	19-10	495
LSHE-A-30	34-1	23-5	620
LSHE-A-31	34-8	20-8	549
LSHE-A-32	35-0	21-4	575
LSHE-A-33	35-2	24-4	667
LSHE-A-34	36-1	22-4	620
LSHE-A-35	37-3	22-2	632



Long Span Low Profile Arch

Structure No.	Span (ft-in)	Rise (ft-in)	Area (ft²)
LSLPA-A-1	19-5	6-9	105
LSLPA-A-2	20-1	7-6	120
LSLPA-A-3	21-7	7-9	133
LSLPA-A-4	22-3	7-11	140
LSLPA-A-5	23-0	8-0	147
LSLPA-A-6	23-9	8-2	154
LSLPA-A-7	24-6	8-3	161
LSLPA-A-8	25-3	8-5	168
LSLPA-A-9	26-0	8-7	176
LSLPA-A-10	27-3	10-0	217

Structure No.	Span (ft-in)	Rise (ft-in)	Area (ft²)
LSLPA-A-11	28-1	9-6	212
LSLPA-A-12	28-9	10-3	234
LSLPA-A-13	28-10	9-8	220
LSLPA-A-14	30-4	9-11	237
LSLPA-A-15	31-0	10-8	261
LSLPA-A-16	31-8	12-2	309
LSLPA-A-17	31-1	10-1	246
LSLPA-A-18	32-4	12-3	320
LSLPA-A-19	31-10	10-2	255
LSLPA-A-20	33-1	12-5	330

Structure No.	Span (ft-in)	Rise (ft-in)	Area (ft²)
LSLPA-A-21	33-2	11-1	289
LSLPA-A-22	34-6	13-3	368
LSLPA-A-23	34-8	11-4	308
LSLPA-A-24	37-11	15-8	478
LSLPA-A-25	35-5	11-5	318
LSLPA-A-26	38-8	15-9	491

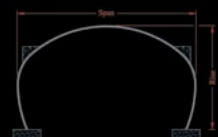


Long Span High Profile Arch

Structure No.	Span (ft-in)	Rise (ft-in)	Area (ft²)
LSHPA-A-1	20-1	9-1	152
LSHPA-A-2	20-9	12-1	214
LSHPA-A-3	21-6	11-8	215
LSHPA-A-4	22-10	14-6	285
LSHPA-A-5	22-3	11-10	225
LSHPA-A-6	22-11	14-0	275
LSHPA-A-7	23-0	11-11	235
LSHPA-A-8	24-4	14-10	309
LSHPA-A-9	23-9	12-1	245
LSHPA-A-10	24-6	13-9	289
LSHPA-A-11	25-10	15-1	335
LSHPA-A-12	25-3	13-1	283

Structure No.	Span (ft-in)	Rise (ft-in)	Area (ft²)
LSHPA-A-13	26-7	15-3	347
LSHPA-A-14	26-0	13-3	294
LSHPA-A-15	27-3	15-5	360
LSHPA-A-16	27-5	13-7	317
LSHPA-A-17	29-5	16-5	412
LSHPA-A-18	28-2	14-5	348
LSHPA-A-19	30-2	18-0	466
LSHPA-A-20	30-4	15-5	400
LSHPA-A-21	31-8	18-4	497
LSHPA-A-22	31-1	15-7	413
LSHPA-A-23	31-9	17-9	484
LSHPA-A-24	32-4	19-11	555

Structure No.	Span (ft-in)	Rise (ft-in)	Area (ft²)
LSHPA-A-25	31-10	17-3	470
LSHPA-A-26	33-1	20-1	572
LSHPA-A-27	32-6	17-4	485
LSHPA-A-28	33-10	20-3	589
LSHPA-A-29	34-0	17-8	514
LSHPA-A-30	34-8	19-10	591
LSHPA-A-31	34-9	17-9	529
LSHPA-A-32	35-5	20-0	608



Shapes identified as "Long Span" take the designation from AASHTO for certain structural plate structures that require shape monitoring measures during the backfill operation. The designation is not to be confused with Lane's Long Span Bridge & Culvert division (Pages 4 and 5), which is not limited to these shapes or services.



**LANE Enterprises, Inc.
Corporate Headquarters**

3905 Hartzdale Drive, Suite 514
Camp Hill, PA 17011
P: 717-761-8175 • F: 717-761-5055
www.lane-enterprises.com



**LANE Enterprises, Inc.
LSBC Division**

8271 Mercer Street
Pulaski, PA 16143
P: 888.949.LSBC (5722) • F: 724.652.0415

LANE Facilities

PENNSYLVANIA

Bedford 814.623.1191
Carlisle 717.249.8342
King of Prussia 610.272.4531
Pulaski 724.652.7747
Shippensburg 717.532.5959

VIRGINIA

Bealeton 540.439.3201
Dublin 540.674.4645
Wytheville 276.223.1051

NEW YORK

Ballston Spa 518.885.4385
Bath 607.776.3366

NORTH CAROLINA

Statesville 704.872.2471

Lane provides a complete range of structural plate for every application.

LANE Products:

- Corrugated Metal Pipe
- Spiral Rib Pipe
- Corrugated HDPE Pipe
- Structural Plate Pipe
- Low Profile Box Culvert
- Open Top Slotted Drain
- Stormwater Management Systems
- CFT (HDPE) Water Quality Unit
- CMP Sandfilter
- Custom Fabrications
- Welded Wire Mesh Gabions
- Structural Plate Headwalls
- Long Span Bridge & Culvert Services
- Rebar and Custom Powder Coatings

