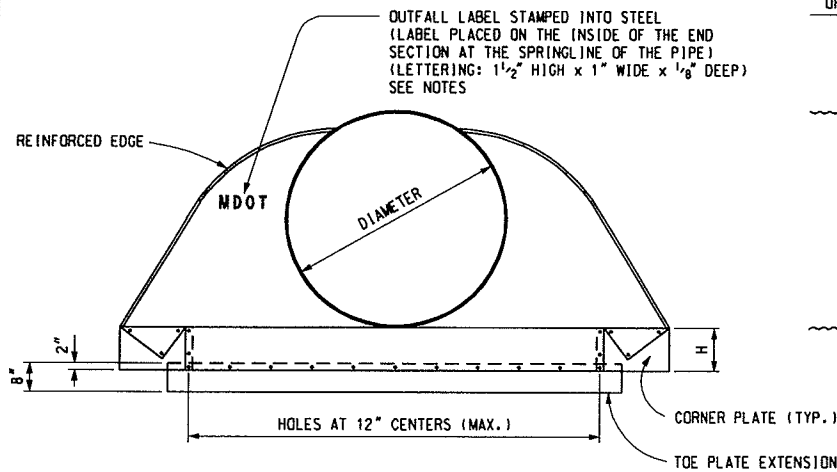


NOTE:  
FOR SECTION A-A  
AND SECTION B-B  
SEE SHEET 4 OF 4

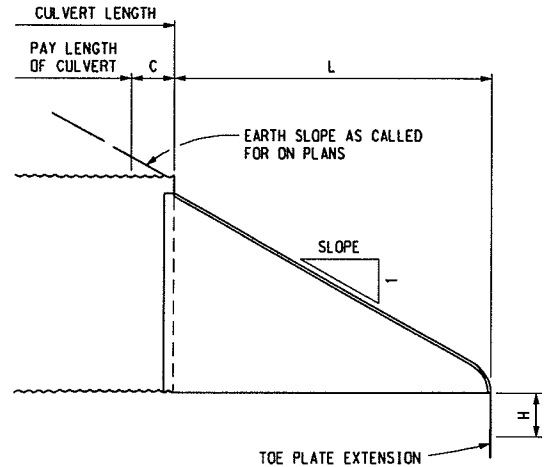
PLAN VIEW

DIMENSIONS									
DIMENSIONS IN INCHES								APPROX SLOPE	BODY
PIPE DIAMETER	MIN. THK.	C	A ± 1"	B MAX.	H ± 1"	L ± 1 1/2"	W ± 2"		
12	0.064	48	6	6	6	21	24	2.50	1 Pc
15	0.064	48	7	8	6	26	30	2.50	1 Pc
18	0.064	48	8	10	6	31	36	2.50	1 Pc
21	0.064	36	9	12	6	36	42	2.50	1 Pc
24	0.064	36	10	13	6	41	48	2.50	1 Pc
30	0.079	24	12	16	8	51	60	2.50	1 Pc
36	0.079	36	14	19	9	60	72	2.50	2 Pc
42	0.109	36	16	22	11	69	84	2.50	2 Pc
48	0.109	24	18	27	12	78	90	2.25	2 Pc
54	0.109	12	18	30	12	84	102	2.00	2 Pc
* 60	0.109	12	18	33	12	87	114	1.75	3 Pc
* 66	0.109	12	18	36	12	87	120	1.50	3 Pc
* 72	0.109	12	18	39	12	87	126	1.33	3 Pc
* 78	0.109	12	18	42	12	87	132	1.25	3 Pc
* 84	0.109	12	18	45	12	87	138	1.16	3 Pc

\* ALL THREE PIECE BODIES HAVE 0.109" SIDES AND 0.138" CENTER PANELS. WIDTH OF CENTER PANEL TO BE GREATER THAN 20% OF THE PIPE PERIPHERY. MULTIPLE PANEL BODIES TO HAVE LAP SEAMS WHICH ARE TO BE TIGHTLY JOINED BY 3/8" DIAMETER GALVANIZED RIVETS OR BOLTS.



END VIEW



LONGITUDINAL VIEW

NOTE: SEE SHEET 3 FOR CONNECTION DETAILS

STEEL END SECTION FOR CORRUGATED STEEL CIRCULAR PIPE



PREPARED BY  
DESIGN  
SUPPORT AREA

DRAWN BY: B.L.T.

CHECKED BY: W.K.P.

DEPARTMENT DIRECTOR  
Gloria J. Jeff

APPROVED BY: \_\_\_\_\_  
ENGINEER OF DELIVERY

APPROVED BY: \_\_\_\_\_  
ENGINEER OF DEVELOPMENT

MICHIGAN DEPARTMENT OF TRANSPORTATION  
BUREAU OF HIGHWAY DEVELOPMENT STANDARD PLAN FOR

STEEL END SECTION

11-17-2005  
F.H.W.A. APPROVAL

4-22-2005  
PLAN DATE

R-88-D

SHEET  
1 OF 4