

**SECTIONAL CARBIDE TIPPED CURVED BLADE WITH CARBIDE
EMBEDDING SPEC.**

VBL PART NO. 34641PTGB-CE

THICKNESS: .750 INCHES SUBJECT TO STANDARD STEEL MILL TOLERANCES

WIDTH: 6.00 INCHES SUBJECT TO STANDARD STEEL MILL TOLERANCES

LENGTH: 48 INCHES

HOLES: .6875 INCHES SQUARE WITH COUNTERSINK TO SUIT #3 HEAD PLOW OR SCRAPER BOLT, STANDARD SPACING OF 2 HOLES 3.00 AND 6.00 INCH CENTERS RESPECTIVELY FROM EACH END OF THE BLADE SECTION, AND AT 6.00 INCH CENTERS BETWEEN.
HOLES ARE TO BE LOCATED IN A STRAIGHT LINE PARALLEL TO WEARING EDGE OF BLADE AT 1.625 INCHES FROM TOP EDGE OF BLADE.

TUNGSTEN CARBIDE TIPS

MATERIAL: STANDARD ROCK DRILL GRADE, 88% CARBIDE – 12% COBALT TO 89% CARBIDE – 11% COBALT COMPOSITION

SHAPE: "TRAPEZOID" TWENTY-FIVE DEGREE

THICKNESS: .365 INCHES - .005 INCHES

HEIGHT: .635 INCHES MINIMUM

LENGTH: 1.125 INCHES MAXIMUM - .500 INCHES MINIMUM, NOMINAL .995 INCHES

HARDNESS RATING: 88.2 ROCKWELL A
DENSITY: 14.35 GRAMS MINIMUM
TRAVERSE RUPTURE
STRENGTH: 370,000 psi

TUNGSTEN CARBIDE TIP INSERTION

TIPS ARE TO BE INSERTED IN GROOVE, SUITABLY PREPARED IN METAL BLADE, USING ELECTRIC INDUCTION HEATING; BLAZING SOLDER ALLOY TO THE FOLLOWING METALLURGICAL SPECIFICATION.

| | | |
|----|-----|--|
| Cu | 58% | MINIMUM BEND RUPTURE STRENGTH OF 70,000 psi |
| Zn | 38% | |
| Mn | 4% | |
| Co | 4% | |

HEAT APPLICATION AND CONTROL INFORMATION IS CONFIDENTIAL. TIPS ARE TO BE SOLDERED ON ALL SIDE ANDS ENDS EXCEPT THE AREA FORMING BULL NOSE AND THE SPACE BETWEEN TIPS SHALL NOT EXCEED .010 INCHES.

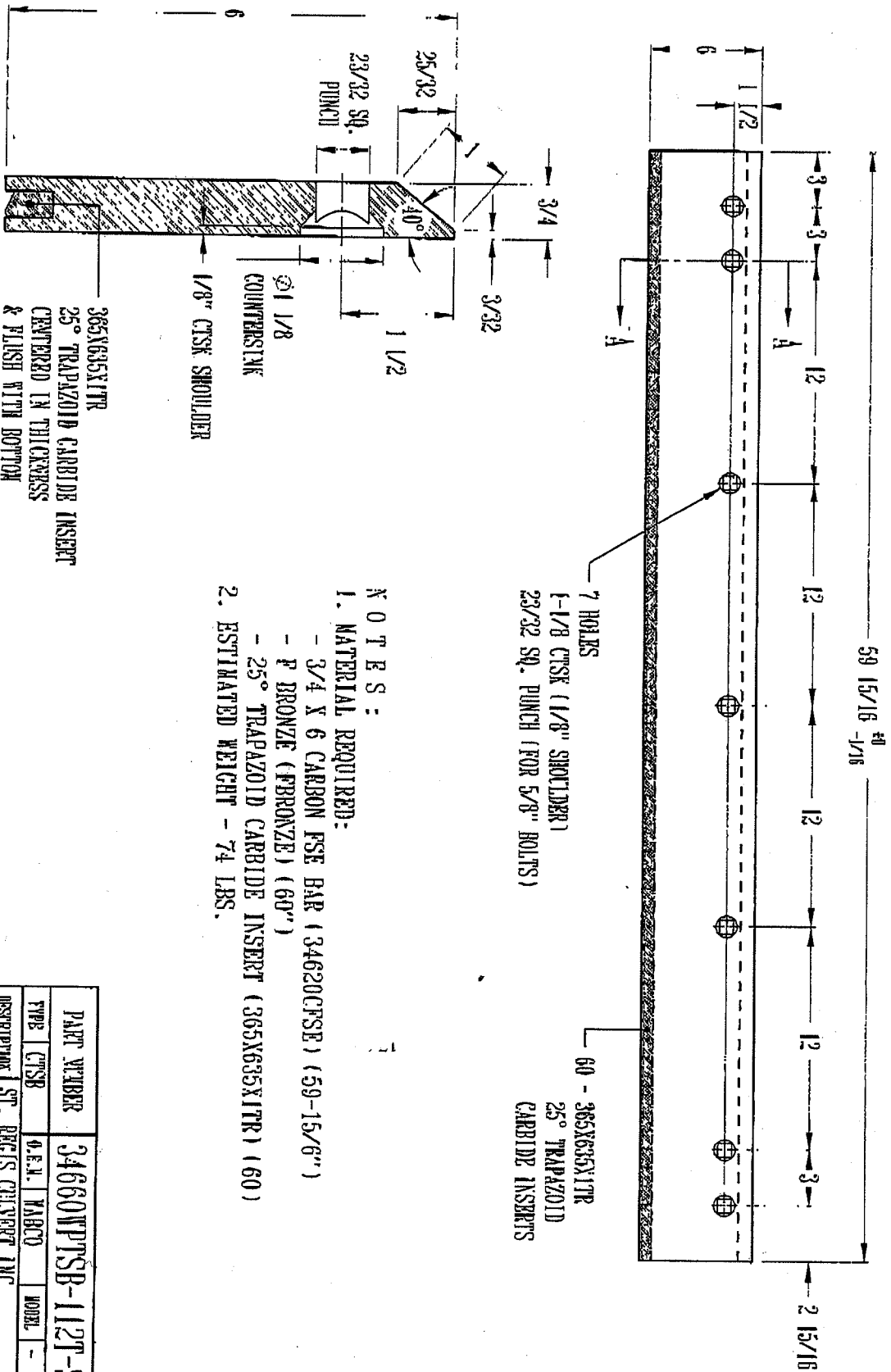
DIFFERENCES BETWEEN HIGHEST AND LOWEST POINT IN CARBIDE EDGE SHALL NOT EXCEED .025 INCHES.

NOTE: CARBIDE EDGE COMPLETELY FLUSH WITH STEEL EDGE.

CARBIDE EMBEDDING

A 1" CARBIDE EMBEDDED STRIP SHALL BE THE FULL LENGTH OF THE BLADE, AND FLUSH WITH THE BOTTOM EDGE.

THE CARBIDE CHIPS SHALL BE STANDARD 8-14 GRANULAR CARBIDE.



7 HOLES
 1-1/8 CTSK (1/8" SHOULDER)
 23/32 SQ. PUNCH (FOR 5/8" BOLTS)

60 - 365X635X1TR
 25° TRAPAZOID
 CARBIDE INSERTS

- NOTES:
1. MATERIAL REQUIRED:
 - 3/4 X 6 CARBON FSE BAR (34620CFSE) (59-15/6")
 - P BRONZE (PBRONZE) (60")
 - 25° TRAPAZOID CARBIDE INSERT (365X635X1TR) (60)
 2. ESTIMATED WEIGHT - 74 LBS.

365X635X1TR
 25° TRAPAZOID CARBIDE INSERT
 CENTERED IN THICKNESS
 & FLUSH WITH BOTTOM

SECTION A-A
 (4 X Scale)

10651

| | | | |
|------------------------|-----------------------------------|--------------|-------|
| PART NUMBER | 34660WPTSB-112T-STRE | | |
| TYPE | CTSB | Q.E.N. MABCO | MODEL |
| DESCRIPTION / CUSTOMER | ST. REGIS CHEVROLET INC. (STRICT) | | |
| DATE OF FIRST ORDER | DATE OF | BY | DATE |
| SCALE | 1:2500 | ENGR BY | DATE |
| VALLEY BLADES LIMITED | | ENGR BY | DATE |

34660WPTSB-112T-STRE